

Hymson Laser

Metal Intelligent Equipments Product
海目星激光钣金智能装备



地址:广东省江门市蓬江区金桐八路18号
江苏省常州市金坛区金坛大道66号
网址:www.hymson-laser.com 全国销售热线:400-804-3288

 www.hymsonlaser.net  info@hymson.com

 Hymson Laser  Hymson Laser  Hymson Laser



Hymson

改变世界装备格局 推动人类智造进步
Your Reliable Partner We Grow Together

Hymson
CONTENTS 目录

改变世界装备格局 推动人类智造进步

Your Reliable Partner We Grow Together



01/ 企业篇 INTRODUCTION

企业介绍/Company Introduction	03
集团布局/Company Layout	05
发展历程/Development History	07
荣誉资质/Honor	09

02/ 产品篇 PRODUCTS

产品系列/Product Series	11
光纤激光切割机/Fiber Laser Cutting Machine	13
管材激光切割机/Tube Laser Cutting Machine	21
精密激光切割机/Precision Laser Cutting Machine	27
激光焊机/Laser Welding Machine	29

03/ 服务篇 SERVICE

合作伙伴/Partners	31
贴心服务/Considerate Service	33
服务网络/Service Network	35



企业篇

INTRODUCTION

- ▶ 企业介绍
COMPANY INTRODUCTION
- ▶ 集团布局
COMPANY LAYOUT
- ▶ 发展历程
DEVELOPMENT HISTORY
- ▶ 荣誉资质
HONOR

企业介绍

COMPANY INTRODUCTION

HYMSON

海目星(股票代码:688559)成立于2008年,一直以来深耕激光和自动化领域,现已成为业界领先的激光和自动化装备综合解决方案提供商,是国家高新技术企业。

海目星激光一直关注光纤激光钣金应用市场,并成立了激光钣金智能装备事业部。经过十多年的潜心钻研,海目星激光积累了厚实的激光切割技术,拥有成熟的自动化制造经验。并针对不同行业的钣金应用,为用户提供专业及高品质的产品组合和服务,包括激光板材切割智能装备、激光管材切割智能装备、激光焊接和打标智能装备和激光自动化软件等综合性激光自动化解决方案。广泛应用于工程机械、建筑机械、轻工机械、智能家居、厨卫五金、电气装备、汽车制造、航天航空、石油机械等行业。

Hymson Laser was founded in 2008 with a mission to design valuable integrated laser and automation solutions for customers. As one of the largest producers of laser intelligent technologies in China, Hymson Laser is a leading supplier of automation systems for new energy automobile, consumer electronics and metal fabrication industries.

Hymson Laser has been paying attention to the fiber laser sheet metal application market, and established the sheet metal intelligent equipment division. After years of research and development, Hymson Laser has accumulated solid laser cutting technology and has mature automated manufacturing experience. And for sheet metal applications in different industries, We provide users with professional and high-quality product portfolio and services, including comprehensive laser automation solutions such as laser plate cutting intelligent equipment, laser tube cutting intelligent equipment, laser welding intelligent equipment, marking intelligent equipment, and laser automation software.

Our current customers are experienced experts in varies of industry, such as sheet metal, engineering machinery, construction, smart furniture, bathroom & kitchen hardware, electric equipment, automobile, aviation and petroleum industry.



JIANGMEN

海目星(江门)激光智能制造生产基地
HYMSON SMART FACTORY (JIANGMEN)



注册资本4亿
Registered Capital
of 400 million



子公司6家
6 Subsidiaries



员工2000多人
Over 2000
Employees



专利技术数百项
Hundreds
of Patents



合作企业数千家
Thousands of
Cooperative Enterprises

集团布局 COMPANY LAYOUT

COMPANY LAYOUT



海目星公司总部位于深圳市龙华区, 现拥有海目星(江
门)激光智能装备有限公司、广州市海目星激光科技有限公
司、海目星激光智能装备(江苏)有限公司和鞍山海目星科技
有限公司等多家全资子公司。并在广东江门市和江苏常州市
分别设有两大全球智能制造生产基地。海目星激光布局全球
，目前已成立了海目星(美国)公司以及海目星意大利研发中
心, 品牌全球化进程加速迈进。

Hymson Laser is a global laser intelligent equipment
manufacturer. The company headquarter is located in
Shenzhen (Guangdong). Four additional development ,
production, sales and service subsidiaries are respectively
located in Guangzhou(Guangdong), Jiangmen(Guangdong),
Changzhou(Jiangsu) and Anshan(Liaoning). The factories
in Jiangmen and Changzhou were designed as the most
advanced and largest smart factories among the laser
manufacturers in China. What's more, Hymson Laser has
established , Hymson (USA) company and Hymson Italy R &
D center. With the advantages of "Chinese Manufacture,
European Technology", Hymson Laser products have been
sold around the globe, the process of brand globalization
is gradually advancing.



发展历程 DEVELOPMENT HISTORY



海目星激光成立
国内首台便携式激光机问世
Establishment of Hymson
Publishing of portable laser machine

2008



广州海目星成立
首台板材激光切割机问世
Establishment of Guangzhou Hymson
Publishing of sheet laser cutting machine

2010



中国创新创业大赛二等奖
深圳第一名
Second prize of Innovation and
Entrepreneurship Competition in China
First place in Shenzhen

2012



新能源行业专用设备问世
Publishing of dedicated
device in new energy industry

2015



江门海目星成立
江苏海目星成立
Establishment of Jiangmen Hymson
Establishment of Jangsu Hymson

2017



美国海目星成立
意大利海目星成立
Establishment of U.S.A Hymson
Establishment of Italy Hymson

2019



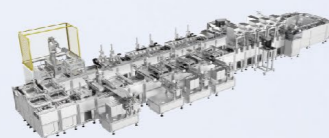
2009

国内首台蚀刻模板
激光机问世
Publishing of etching
template laser machine



2011

首台紫外风冷5WU激光器问世
Publishing of 5WU
cold ultraviolet laser



2013

鞍山海目星成立
Establishment of
Anshan Hymson



2016

年度创新技术产品金球奖
Golden ball award of
annual innovative technical products



2018

组建意大利研发团队
Formation of Italian R & D team



2020

科创板成功上市
Company Listing



YOUR RELIABLE PARTNER
WE GROW TOGETHER

荣誉资质 HONOR

- ▶ 国家级高新技术企业
- ▶ 2018年度特殊贡献奖
- ▶ 年度创新技术产品金球奖
- ▶ 年度最具投资价值企业
- ▶ 南京工业大学研究生创新基地
- ▶ ISO9001:2015质量管理体系认证



NO.



研发工程师：**数百人**

Hundreds of R&D engineers

高级工程师：**数十人**

Dozens of senior engineers

研发核心团队：**三十年**以上激光及自动化经验

The R & D core technical team has 30 years of experience in laser and automation



发明专利：近百项
Patent for Invention:
About Hundred Patents for Invention



实用新型专利：超百项
Utility Model Patents:
Hundreds Utility Model Patents



软件著作权：近百项
Software Works:
About Hundred Software Works



产品篇
PRODUCTS

- ▶ 光纤激光切割机
FIBER LASER INTELLIGENT CUTTING MACHINE
- ▶ 管材激光切割机
TUBE LASER INTELLIGENT CUTTING MACHINE
- ▶ 精密激光切割机
PRECISION LASER INTELLIGENT CUTTING MACHINE
- ▶ 激光焊接机
LASER WELDING MACHINE

HF·H

HF·H Series Fiber Laser Cutting Machine

光纤激光切割机 FIBER LASER CUTTING MACHINE



切割样品/Samples



应用材料范围: 0.5~70MM不锈钢, 0.5~50MM碳钢板, 0.5~50MM铝板, 0.5~25MM铜板, 镀锌板, 电解板和硅钢等多种金属板材切割。

Applicable Materials: Specially used for cutting 0.5~70MM stainless steel, 0.5~50MM carbon steel, 0.5~50MM aluminum, 0.5~25MM copper, as well as galvanized steel, electrolytic steel and silicon steel etc.

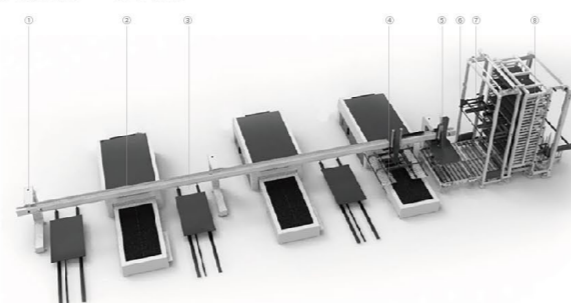
机型特点/Features

升降式交换工作平台
Lifting Exchange Pallet



柔性自动化制造系统FMS
Flexible Manufacture System

- ① 激光上下料机器人
- ② 海目星激光切割机
- ③ 成品车
- ④ 插齿下料工装
- ⑤ 轨道定位台
- ⑥ 吸盘上料工装
- ⑦ 单张取料装置
- ⑧ 立体物料仓

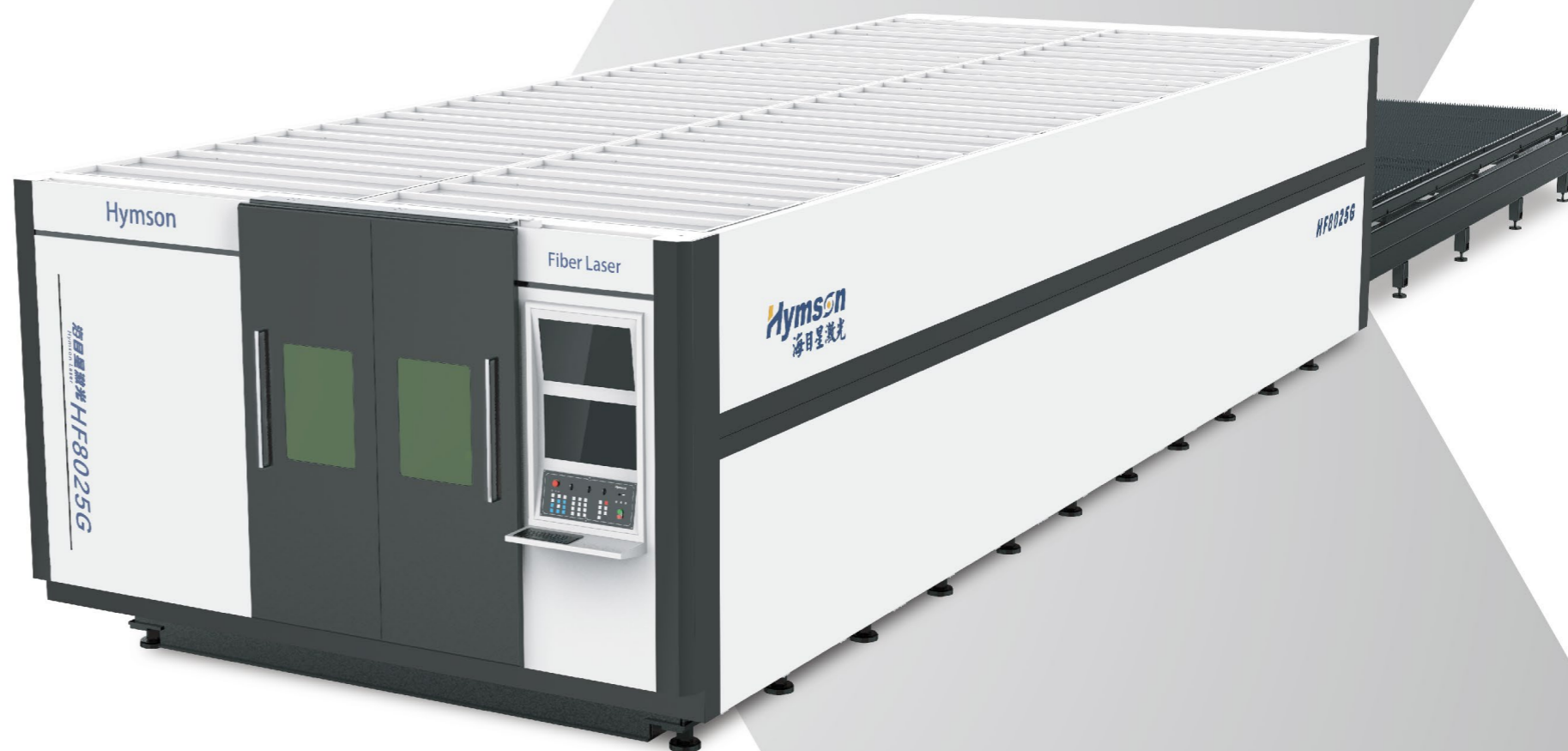


性能指标参数/Technical Specification

机型/Model	HF3015H	HF4020H	HF6020H	HF6025H
加工幅面 Processing area	3000mmX1500mm	4000mmX2000mm	6000mmX2000mm	6000mmX2500mm
激光器功率 Power	1500W-15000W	1500W-15000W	1500W-15000W	1500W-15000W
X/Y轴定位精度 X/Y axis positioning accuracy	±0.03mm/m	±0.03mm/m	±0.03mm/m	±0.03mm/m
X/Y轴重复定位精度 X/Y axis repeat positioning accuracy	±0.02mm	±0.02mm	±0.02mm	±0.02mm
X/Y轴最大定位速度 X/Y axis max. positioning speed	169m/min	169m/min	169m/min	169m/min
X/Y轴最大加速度 X/Y axis max. acceleration	1.5g	1.2g	1.2g	1.0g
工作台最大载重 Max. load of worktable	0.8t	1.5t	2.6t	3.0t
设备总重量 Weight of machine tool	8.7t	12.5t	15.1t	16.5t
整机占地面积 Dimension(L*W)	8500mmX5900mm	10500mmX6400mm	15000mmX6400mm	15000mmX7000mm

HF·G HF·G Series Fiber Laser Cutting Machine

光纤激光切割机 FIBER LASER CUTTING MACHINE



切割样品 / Samples



应用材料范围: 0.5~70MM不锈钢, 0.5~50MM碳钢板, 0.5~50MM铝板, 0.5~25MM铜板, 镀锌板, 电解板和硅钢等多种金属板材切割。

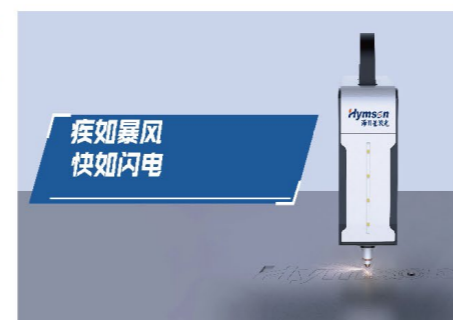
Applicable Materials: Specially used for cutting 0.5~70MM stainless steel, 0.5~50MM carbon steel, 0.5~50MM aluminum, 0.5~25MM copper, as well as galvanized steel, electrolytic steel and silicon steel etc.

机型特点 / Features

超高功率
Super High Power

Master 9000 控制系统
Master 9000 Control System

闪电切割工艺技术
Flash Cutting Technology



性能指标参数 / Technical Specification

机型/Model	HF4020G	HF6020G	HF6025G	HF8025G
加工幅面 Processing area	4000mmX2000mm	6000mmX2000mm	6000mmX2500mm	8000mmX2500mm
激光器功率 Power	1500W-15000W	1500W-15000W	1500W-15000W	1500W-15000W
X/Y轴定位精度 X/Y axis positioning accuracy	±0.03mm/m	±0.03mm/m	±0.03mm/m	±0.03mm/m
X/Y轴重复定位精度 X/Y axis repeat positioning accuracy	±0.02mm	±0.02mm	±0.02mm	±0.02mm
X/Y轴最大定位速度 X/Y axis max. positioning speed	169m/min	169m/min	169m/min	169m/min
X/Y轴最大加速度 X/Y axis max. acceleration	1.2g	1.2g	1.0g	1.0g
工作台最大载重 Max. load of worktable	1.0t	2.6t	3.0t	4.0t
设备总重量 Weight of machine tool	12t	17t	19t	24t
整机占地面积 Dimension(L*W)	10500mmX5900 mm	15000mmX6400mm	15000mmX7000mm	20000mmX7000mm

HF·C HF·C Series Fiber Laser Cutting Machine

光纤激光切割机

FIBER LASER CUTTING MACHINE

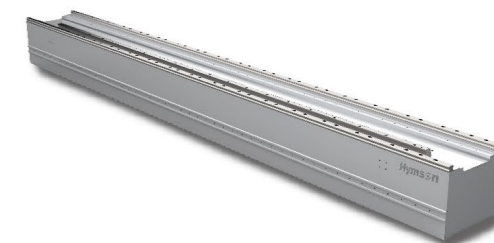


机型特点/Features

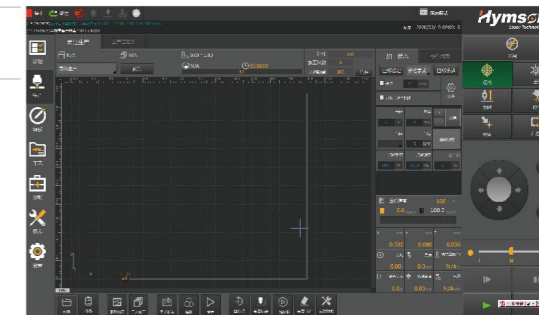
钣金榫卯式结构的机床底座设计
Sheet Welding Machine Base with Mortise and Tenon Structure



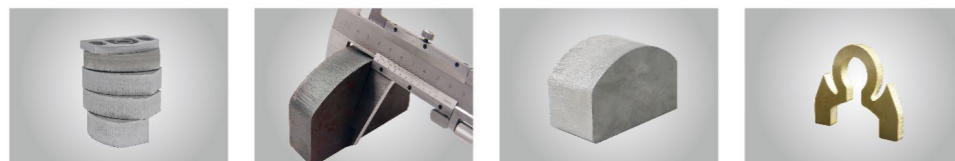
铝合金拉制横梁
Aircraft Aluminum Extrusion for Gantry Beam



Master 8000 控制系统
Master 8000 Control System



切割样品/Samples



应用材料范围: 0.5~30MM 不锈钢, 0.5~30MM 碳钢板, 0.5~30MM 铝板, 0.5~15MM 铜板, 镀锌板, 电解板和硅钢等多种金属板材切割。

Applicable Materials: Specially used for cutting 0.5~30MM stainless steel, 0.5~30MM carbon steel, 0.5~30MM aluminum, 0.5~15MM copper, as well as galvanized steel, electrolytic steel and silicon steel etc.

性能指标参数/Technical Specification

机型/Model	HF4020C	HF6020C	HF6025C	HF8025C
加工幅面 Processing area	4000mmX2000mm	6000mmX2000mm	6000mmX2500mm	8000mmX2500mm
激光器功率 Power	1500W-8000W	1500W-8000W	1500W-8000W	1500W-8000W
X/Y轴定位精度 X/Y axis positioning accuracy	±0.03mm/m	±0.03mm/m	±0.03mm/m	±0.03mm/m
X/Y轴重复定位精度 X/Y axis repeat positioning accuracy	±0.02mm	±0.02mm	±0.02mm	±0.02mm
X/Y轴最大定位速度 X/Y axis max. positioning speed	140m/min	140m/min	140m/min	140m/min
X/Y轴最大加速度 X/Y axis max. acceleration	1.0g	1.0g	0.8g	0.8g
工作台最大载重 Max. load of worktable	1.5t	2.5t	3.0t	4.0t
设备总重量 Weight of machine tool	10t	15t	16.5t	22t
整机占地面积 Dimension(L*W)	10500mmX5750mm	15000mmX6400mm	15000mmX7000mm	20000mmX7000mm

HF·B

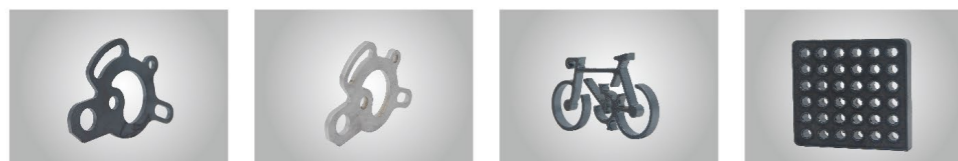
HF·B Series Fiber Laser Cutting Machine

光纤激光切割机

FIBER LASER CUTTING MACHINE



切割样品 / Samples



应用材料范围: 0.5~25MM 不锈钢, 0.5~25MM 碳钢板, 0.5~25MM 铝板, 0.5~12MM 铜板, 镀锌板, 电解板和硅钢等多种金属板材切割。

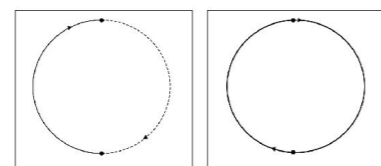
Applicable Materials: Specially used for cutting 0.5~25MM stainless steel, 0.5~25MM carbon steel, 0.5~25MM aluminum, 0.5~12MM copper, as well as galvanized steel, electrolytic steel and silicon steel etc.

机型特点 / Features

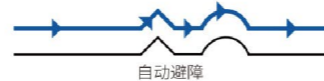
钣焊榫卯式结构的机床底座设计
Sheet Welding Machine Base with Mortise and Tenon Structure



任意点切入切割工艺技术
Arbitrary Start Cutting Position



自动避障切割工艺技术
Automatic Avoid-obstacle



性能指标参数 / Technical Specification

机型/Model	HF3015B
加工幅面 Processing area	3000mmX1500mm
激光器功率 Power	1500W-8000W
X/Y轴定位精度 X/Y axis positioning accuracy	±0.03mm/m
X/Y轴重复定位精度 X/Y axis repeat positioning accuracy	±0.02mm
X/Y轴最大定位速度 X/Y axis max. positioning speed	140m/min
X/Y轴最大加速度 X/Y axis max. acceleration	1.2g
工作台最大载重 Max. load of worktable	0.9t
设备总重量 Weight of machine tool	8t
整机占地面积 Dimension(L*W)	8330mmX5700mm

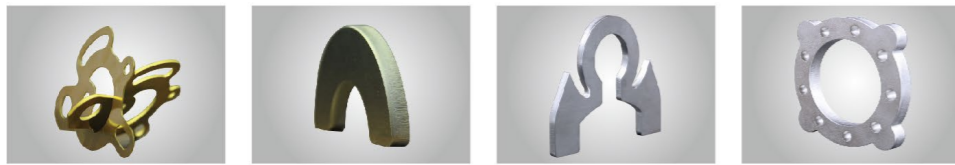
HF·E HF·E Series Fiber Laser Cutting Machine

光纤激光切割机

FIBER LASER CUTTING MACHINE



切割样品 / Samples

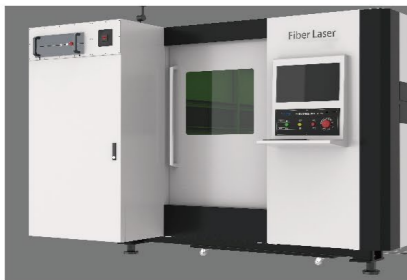


应用材料范围: 0.5~30MM不锈钢, 0.5~30MM碳钢板, 0.5~30MM铝板, 0.5~15MM铜板, 镀锌板, 电解板和硅钢等多种金属板材切割。

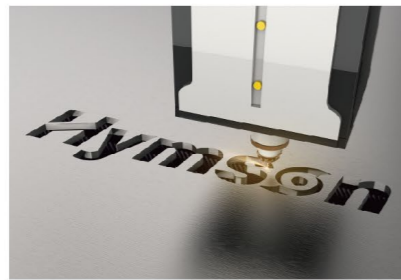
Applicable Materials: Specially used for cutting 0.5~30MM stainless steel, 0.5~30MM carbon steel, 0.5~30MM aluminum, 0.5~15MM copper, as well as galvanized steel, electrolytic steel and silicon steel etc.

机型特点 / Features

全新外观机床设计
New machine appearance design



金属板材高效率切割
High-efficiency cutting of sheet metal



丰富激光切割工艺库
Wealth of laser cutting technology



性能指标参数 / Technical Specification

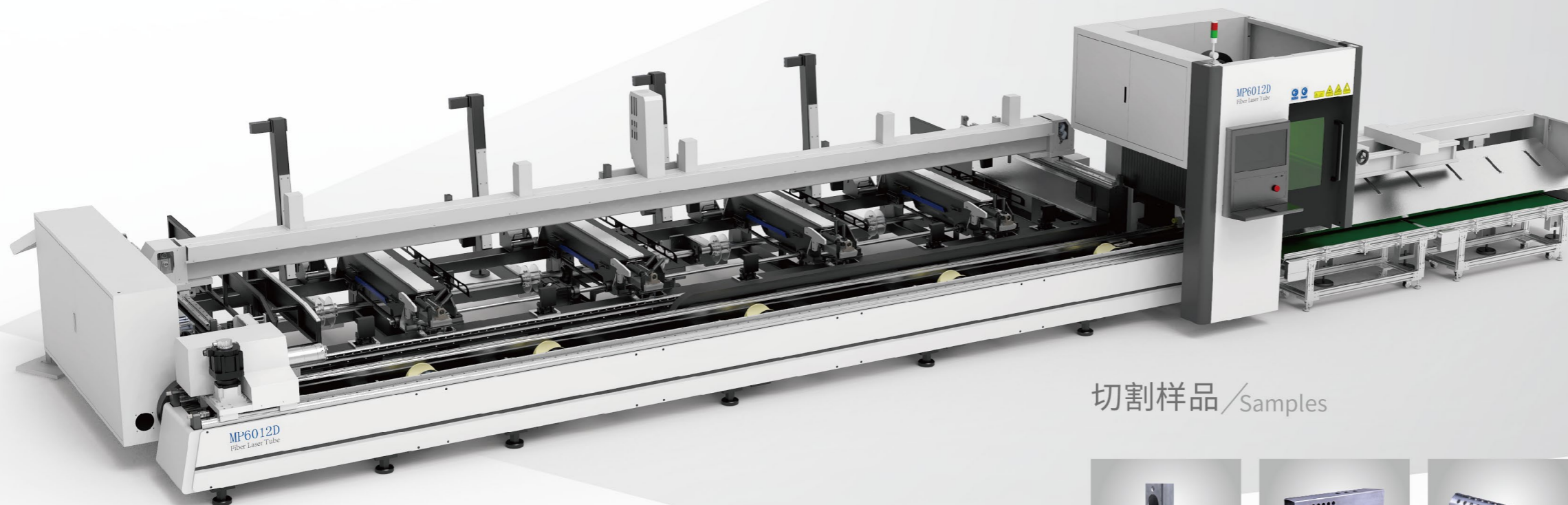
机型/Model	HF3015E	HF4020E
加工幅面 Processing area	3000mmX1500mm	4000mmX2000mm
X/Y轴定位精度 X/Y axis positioning accuracy	±0.03mm/m	±0.03mm/m
X/Y轴重复定位精度 X/Y axis repeat positioning accuracy	±0.02mm	±0.02mm
X/Y轴最大定位速度 X/Y axis max. positioning speed	110m/min	110m/min
X/Y轴最大加速度 X/Y axis max. acceleration	0.8g	0.8g
Z轴最大定位速度 Z axis max. positioning speed	30m/min	30m/min
Z轴最大加速度 Z axis max. acceleration	1.0g	1.0g
工作台最大载重 Max. load of worktable	0.7t	1t
设备总重量 Weight of machine tool	6t	9t
整机占地面积 Dimension(L*W)	8700mmX5700mm	10800mmX6300mm

MP·6012D

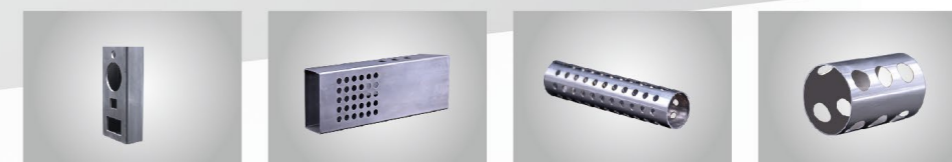
MP·6012D Series Tube Laser Cutting Machine

管材激光切割机

TUBE LASER CUTTING MACHINE



切割样品/Samples



应用材料范围:碳钢或不锈钢圆管 Φ 10MM~ Φ 120MM, 方管与矩形管 \square 10MM~ \square 80MM, 腰圆管和椭圆管, 槽钢, 角钢等异型管材切割。

Applicable Materials: Specially used for cutting Φ 10MM~ Φ 120MM carbon steel and stainless steel round pipe, \square 10MM~ \square 80MM carbon steel and stainless steel square pipe, waist-shaped pipe, oval pipe etc.

机型特点/Features

小管高速切割
High-speed cutting of small tubes



定位速度快, 精度高
Fast positioning speed, High cutting precision



全新小批量/全自动上料系统, 高效稳定
New Loading System



性能指标参数/Technical Specification

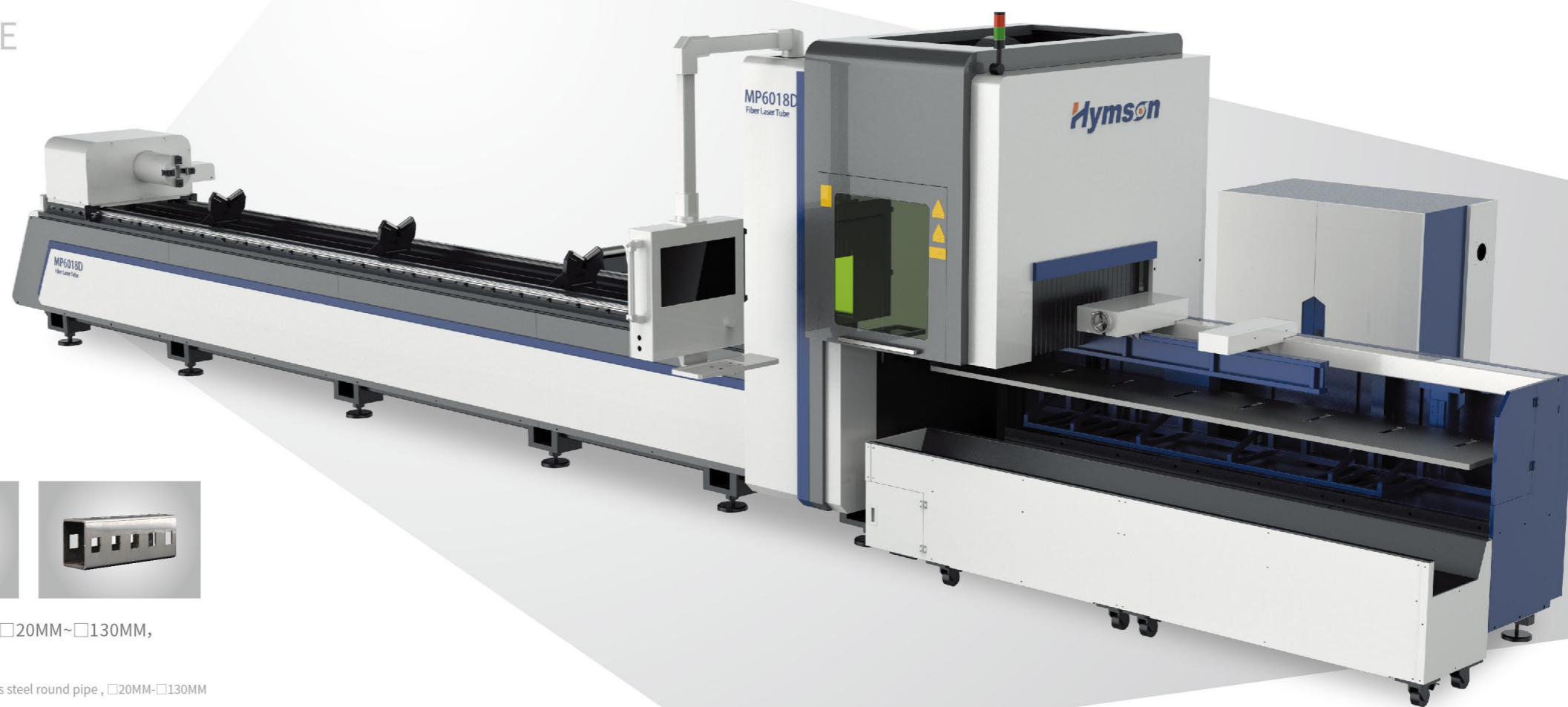
机型/Model	MP6012
加工管材范围 Tube processing area	自动上料: Φ 15 mm~ Φ 100mm、 \square 15 mm~ \square 80mm 手动上料: Φ 10 mm~ Φ 120mm、 \square 10mm~ \square 80mm
激光器功率 Power	1000W-3000W
A,B轴无限旋转 Infinite rotation of A, B axis	150rpm/min
上料长度 Loading length	3000mm~6200mm
最大单管重量 Max. path weigh	15 Kg/m
整机占地面积 Dimension(L*W)	12000mm \times 3000mm

MP-6018D

MP-6018D Series Tube Laser Cutting Machine

管材激光切割机

TUBE LASER CUTTING MACHINE



切割样品/Samples

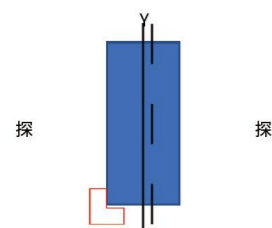


应用材料范围:碳钢或不锈钢圆管 Φ 20MM~ Φ 180MM, 方管与矩形管 \square 20MM~ \square 130MM, 腰圆管和椭圆管等多种异型管材。

Applicable Materials: Specially used for cutting Φ 20MM~ Φ 180MM carbon steel and stainless steel round pipe, \square 20MM~ \square 130MM carbon steel and stainless steel square pipe, waist-shaped pipe, oval pipe etc.

机型特点/Features

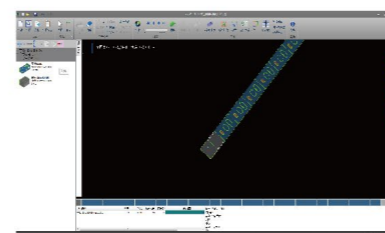
管材纠偏功能
Tube Correcting Function



Z轴随控一体
Z axis Follow and Control Integration



Master 5000T 控制系统
Master 5000T Control System



性能指标参数/Technical Specification

机型/Model	MP6018D
加工管材范围 Tube processing area	6200mm x Φ 20mm~ Φ 180mm / 6200mm x \square 20mm~ \square 130mm
激光器功率 Power	1000W-3000W
上料长度 Loading length	3000mm~6200mm
下料长度 Unloading length	0~3000mm
最大单管重量 Max. path weigh	17Kg/m
整机占地面积 Dimension(L*W)	12000mm X 4000mm

MP-6022D

MP-6022D Series Tube Laser Cutting Machine

管材激光切割机

TUBE LASER CUTTING MACHINE

切割样品/Samples



应用材料范围:碳钢或不锈钢圆管 Φ 10MM~ Φ 220MM,方管与矩形管 \square 10MM~ \square 150MM,腰圆管和椭圆管,槽钢,角钢等异型管材切割。

Applicable Materials: Specially used for cutting Φ 10MM~ Φ 220MM carbon steel and stainless steel round pipe, \square 10MM~ \square 150MM carbon steel and stainless steel square pipe, waist-shaped pipe, oval pipe etc.



机型特点/Features

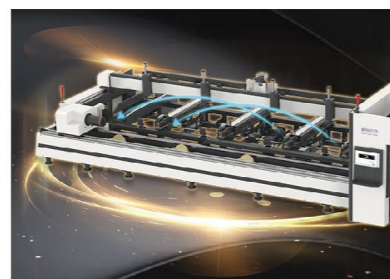
卡盘行程220MM

Maximum stroke of chuck 220mm



自动上下料可选配套装置

Loading and unloading components



焊缝检测功能

Weld Inspection Components



性能指标参数/Technical Specifaion

机型/Model	MP6022
加工管材范围 Tube processing area	自动上料: Φ 20 mm~ Φ 200mm、 \square 20 mm~ \square 140mm 手动上料: Φ 820mm~ Φ 220mm、 \square 20mm~ \square 150mm
激光器功率 Power	1000W-3000W
A,B轴无限旋转 Infinite rotation of A, B axis	100rpm/min
上料长度 Loading length	3000mm~6200mm
最大单管重量 Max. path weigh	30 Kg/m
整机占地面积 Dimension(L*W)	12000mm \times 4000mm

Extra Large Size Fiber Laser Cutting Machine

超大幅面光纤激光切割机

EXTRA LARGE SIZE FIBER LASER CUTTING MACHINE

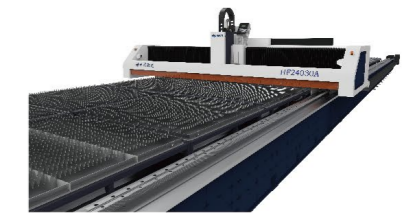


机型特点/Features

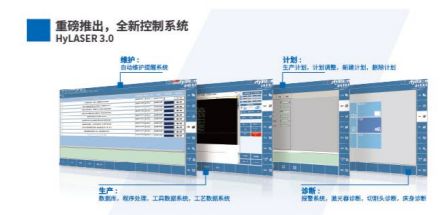
超大幅面工作台
Extra Large Size Working Desk



优化配置, 强大切割能力
Optimized Configuration, Powerful Cutting Capability



Master 9000 控制系统
Master 9000 Control System



切割样品/Samples



应用材料范围: 0.5~70MM不锈钢, 0.5~50MM碳钢板, 0.5~50MM铝板, 0.5~25MM铜板, 镀锌板, 电解板和硅钢等多种金属板材切割。

Applicable Materials: Specially used for cutting 0.5~70MM stainless steel, 0.5~50MM carbon steel, 0.5~50MM aluminum, 0.5~25MM copper, as well as galvanized steel, electrolytic steel and silicon steel etc.

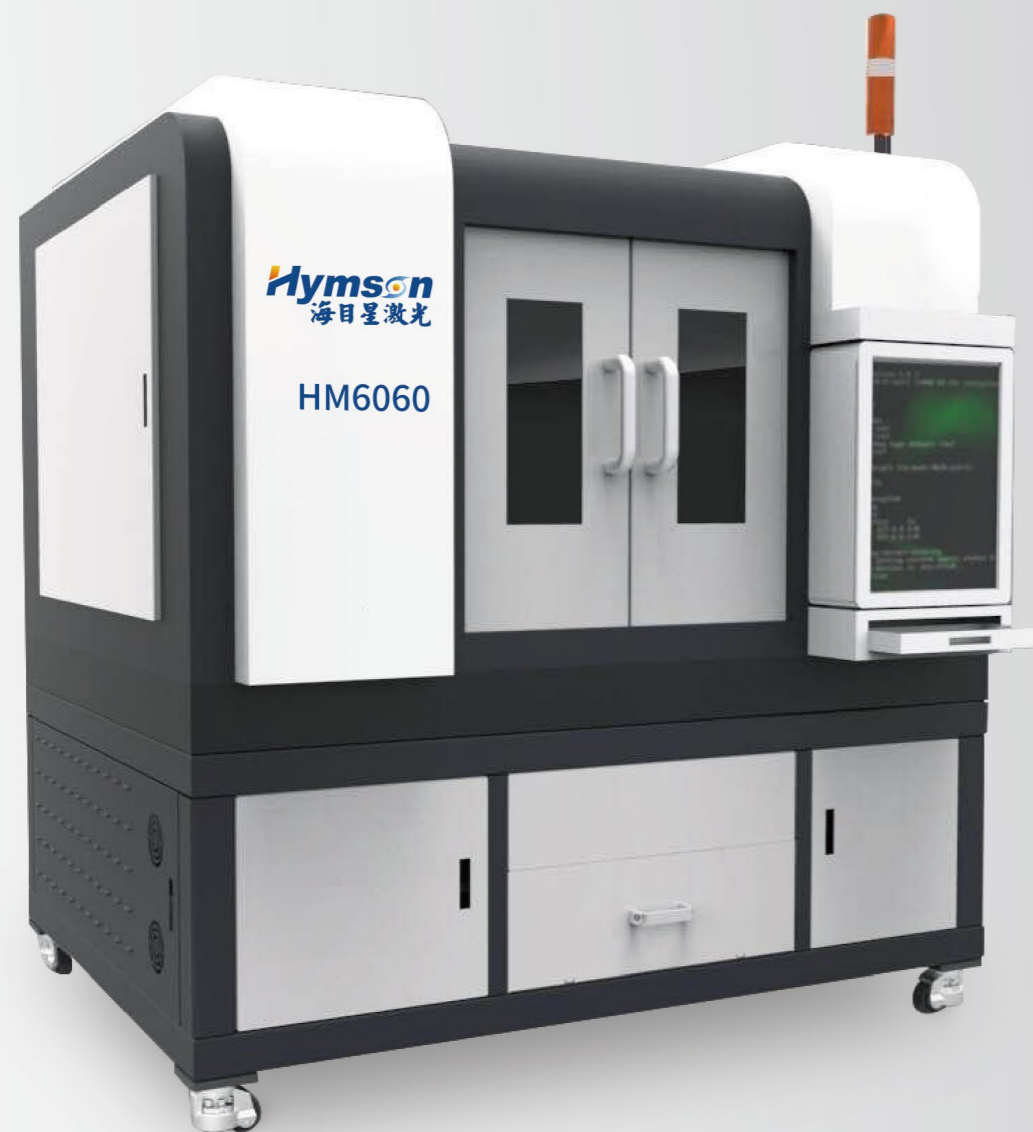
性能指标参数/Technical Specification

机型/Model	HF12030	HF24030	HF30030
加工幅面 Processing area	12000mmX3000mm	24000mmX3000mm	30000mmX3000mm
激光器功率 Power	≤15000W	≤15000W	≤15000W
X/Y轴定位精度 X/Y axis positioning accuracy	±0.1mm/m	±0.1mm/m	±0.1mm/m
X/Y轴重复定位精度 X/Y axis repeat positioning accuracy	±0.05mm	±0.05mm	±0.05mm
X/Y轴最大定位速度 X/Y axis max. positioning speed	100m/min	100m/min	100m/min
X/Y轴最大加速度 X/Y axis max. acceleration	0.8g	0.8g	0.8g
Z轴最大定位速度 Z axis max. positioning speed	30m/min	30m/min	30m/min
Z轴最大加速度 Z axis max. acceleration	1.2 g	1.2 g	1.2 g
设备总重量 Weight of machine tool	16t	35t	38t
整机占地面积 Dimension(L*W)	15000mmX9000mm	31000mmX9000mm	36000mmX9000mm

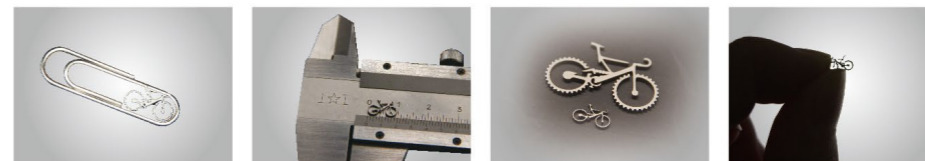
HM HM Series Precision Laser Cutting Machine

精密激光智能切割机

PRECISION LASER CUTTING MACHINE



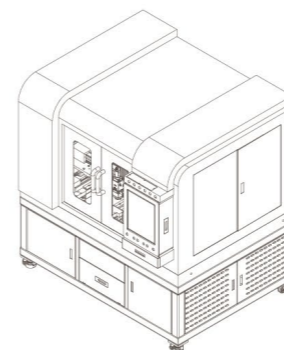
切割样品 / Samples



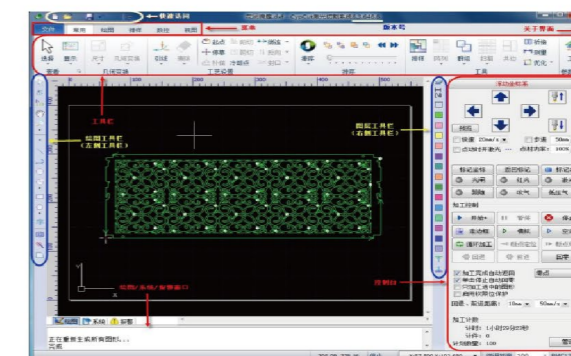
应用材料范围: 不锈钢、碳钢、铝板、各种合金板稀有金属等多种金属薄板材的切割。
Applicable Materials: Specially used for cutting stainless steel, carbon steel, aluminum, rare metals and other thin plates.

机型特点 / Features

占地面积小
Small Footprint



高效切割数控系统
Efficient Cutting CNC System



性能指标参数 / Technical Specification

机型/Model	HM6060
加工幅面 Processing area	600mm × 600mm
激光器功率 Power	800W-1500W
X轴行程 X axis track	600mm
Y轴行程 Y axis track	600mm
Z轴行程 Z axis track	100mm
X/Y轴定位精度 X/Y axis positioning accuracy	±0.01mm
X/Y轴重复定位精度 X/Y axis repeat positioning accuracy	±0.004mm
X/Y轴最大定位速度 X/Y axis max. positioning speed	80m/min
X/Y轴最大加速度 X/Y axis max. acceleration	1g
整机占地面积 Dimension(L*W)	1850mmX1400mm

手持激光焊接机

HADNHELD LASER WELDING MACHINE

完美取代传统氩弧焊、电焊在薄板不锈钢板、铁板、铝板等金属材料方面焊接;焊缝美观,速度快,无焊痕,无变色,无需后期打磨;操作简易上手、对操作人员要求极低。

Innovated technology for replacement of traditional argon arc welding and electric welding, suitable for such thin material as stainless steel , mild steel , aluminum alloy etc. Perfect weld-seam, fast speed, no welding marks,no discoloration after welding and simply operation.



机型特点/Features

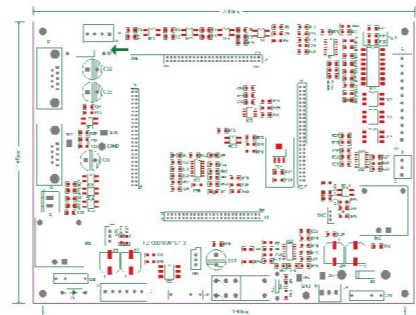
手持摆动焊接头
Holding Swing Welding Joint



送丝系统
Wire Loading System



精密板卡
Precision PCB Board



性能指标参数/Technical Specifaicon

机型/Model	MW
激光器功率 Power	800W-2000W
波长 Wavelength	1080nm
光束质量 Beam quality	2.8m ²
输出光纤长度Feeding fiber cable length	10m
输出光纤直径 Feeding fiber core diameter	50 μm
准直 Collimating focal length	80mm
聚焦 Focusing focal length	150mm
冷却方式 Cooling method	水冷 water
整机占地面积 Dimension(L*W*H)	960mmX525.5mmX1020.5mm

合作伙伴
PARTNERS

以诚为本 合作共赢

海目星激光
始终秉承“贴心服务,让您安心创造财富”
的经营理念,为客户提供周到、快速、专业的服务。

YOUR RELIABLE PARTNER WE GROW TOGETHER



贴心服务 CONSIDERATE SERVICE

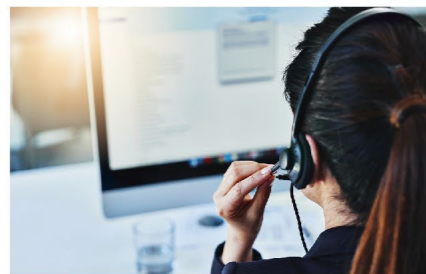


售后支持

After-sales Support

时刻在您身边的售后服务团队,免费提供远程故障解除指导。使用专业安全的报修服务系统,报修服务承诺24小时内工程师响应。

Our services team is always at disposal for providing free remote trouble-shooting; with our professional and safety Service Call System, we can respond to customer within 24 hours.



安装培训

Installation Training

免费为您提供设备安装服务及员工操作培训服务(激光原理、工艺应用、设备保养、安全知识、故障排查),提供员工再培训及技术输送服务。

We offer the services for installation, commissioning and training (principles of laser, application, equipment maintenance, safety knowledge and trouble shooting), also re-training and technical support for our customers.



技术支持

Technical Support

专业的研发技术团队,免费提供应用技术交流及行业应用解决方案,提供硬件和软件升级服务。

Our professional R & D technical team provides free application technology communication and industry application solutions, as well as hardware and software upgrade services.

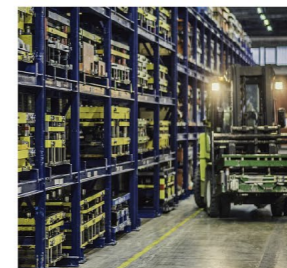


复产支持

Restoration Support

配备充足的备件支持服务,确保维修期间不受影响,以最短时间恢复生产。

Equipped with sufficient spare parts support services to ensure that it will not be affected during maintenance and resume production in the shortest time.

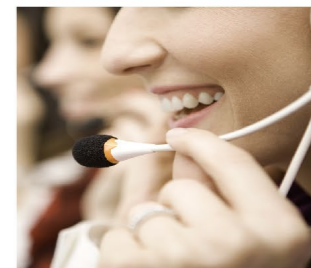


客服专员

Customer Service Executive

专员专管的一站式客户服务,全天12小时为您提供各项咨询及需求服务。

The one-stop customer service managed by the commissioner provides you with various consultation and demand services 12 hours a day.



中国区服务网络示意图

CHINA DOMESTIC SERVICE NETWORK



海目星激光的服务网络已经覆盖全国各省市地区
Hymson Laser services has covered all over the China

国外区域服务网络示意图

FOREIGN REGIONAL SERVICE NETWORK



海目星激光全球服务网络已经遍及近40个国家和地区
Hymson Laser has completed services network in 40 countries over the world



海目星激光保留对机床尺寸、外观和装备的修改权，恕不通知
Hymson Laser remains the right of modification for the size of machine tool, the appearance and the equipment. No any Notifications.